

Catalog of
Koitsu Tsuchiya
Hasui Kawase
Noel Nouet

work

Koitsu Hasui

Born in Hamamatsu, Shizuoka Prefecture in 1870.

In 1886, he became Kiyochika Kobayashi's apprentice, living with Kiyochika and his family for about 20 years, and passing on his skills.

Koitsu is classified into a school called "Shin-hanga," and its characteristics are said to be realistic and linear perspective.

Among them, Koitsu is known as a lyrical landscape painter who skillfully manipulates light and shadow, distance and nearness.

Ten works are in the collection of the National Museum of Modern Art, Tokyo, including "Akashi Beach", "Snowy Katata Ukimido", "Tomo no Tsu", and "Seta Sunset". He died in 1949.

Hasui Kawase

Born in Shiba, Tokyo in 1883.

Around 1897, while attending Okura Commercial Night Club, he studied painting with Aoyagi Sumikawa.

In 1910, he knocked on Kiyokata Kaburagi's door and was given the name ``Hasui."

From then on, he left behind numerous landscape paintings until his death in 1957.

He paints landscapes from all over Japan in a lyrical style, and his works that deal with rain, snow, and the moon are particularly well-received.

Hasui's works have been well received overseas and many prints have been exported.

Noel Nouet

Born in Brittany, France in 1885. In 1910, he met Akiko Yosano and others at a salon in Paris.

She first came to Japan in 1926 as a French teacher at an old high school. Although he returned to Japan, she could not control her love for Japan and returned to Japan in 1930.

In 1935, he entered the world of printmaking and created black and white woodblock prints using his innate design ability and pen touch.

His works from this time include "Zoji" and "Kikyomon," which are housed in the Tokyo National Museum.

He remained in Japan during the war, and after the war he taught at Tokyo, Waseda, Gakushuin, Athena France, etc.

In 1951, he also served as French teacher to the then Crown Prince.

In 1955 he was awarded the Order of the Sacred Treasure, Fourth Class, and in 1965 he received the title of Honorary Citizen from the Tokyo Metropolitan Government.

His technique is extremely precise, and is characterized by almost no deformation that is normally done in printmaking.

LL size 35,000円(税抜き)



LL-01 春の雪 京都円山 光逸 作
Snowfall in Early Spring - Kyoto
By Koitsu 1936
39.4×26cm (15 1/2×10 1/4 in.)



LL-02 名古屋城 光逸 作
Nagoya Castle By Koitsu 1937
39.4×26cm (15 1/2×10 1/4 in.)



LL-03 奈良 興福寺 光逸 作
Kofuku Temple - Nara
By Koitsu 1937
39.4×25.8cm(15 1/2×10 1/8 in.)



LL-04 浅草 金龍山 光逸 作
Pagoda in Asakusa
By Koitsu 1938
39.4×25.8cm(15 1/2×10 1/8 in.)



LL-05 箱根湖水 光逸 作
Lakeside at Hakone
By Koitsu 1938
39.2×25.8cm(15 1/2×10 1/8 in.)



LL-06 雨の宮島 光逸 作
Torii in Miyajima
By Koitsu 1941
39.4×25.9cm(15 1/2×10 1/4 in.)



LL-19 春雨 松島 光逸 作
Matsushima Bay
By Koitsu 1936
26.1×39.3cm(10 1/4×15 1/2 in.)



LL-20 夏の月 宮島 光逸 作
Itsukushima Shrine
By Koitsu 1936
26×39.2cm (10 1/4×15 1/2 in.)

LL size 35,000円(税抜き)



LL-07 牛込 神楽坂 光逸 作
Kagurazaka By Koitsu 1939
39.2×26cm (15 1/2×10 1/4 in.)



LL-08 九州 箱崎八幡宮 光逸 作
Hakozaki Hachiman Shrine
By Koitsu 1938
39×26cm (15 3/8 ×10 1/4 in.)



LL-09 東海道 沼津 光逸 作
Numazu By Koitsu 1940
39.2×25.6cm (15 1/2×10 in.)



LL-10 亀戸 天満宮 光逸 作
Half Moon Bridge - Kameido
By Koitsu 1939
39.5×25.7cm (15 1/2×10 in.)



LL-11 上野公園 光逸 作
Ueno Park By Koitsu 1939
39.4×25.8cm(15 1/2×10 1/8 in.)



LL-12 奈良 法隆寺 光逸 作
Pagoda in Horyu Temple
By Koitsu 1938
39.3×25.8cm(15 1/2×10 1/8 in.)



LL-21 河口湖 光逸 作
Lake Kawaguchi
By Koitsu 1933
25.8×39.3cm(10 1/8×15 1/2 in.)



LL-22 日光 神橋 光逸 作
Shinkyo Bridge - Nikko
By Koitsu 1937
25.5×39.2cm (10×15 1/2 in.)

LL size 35,000円(税抜き)



LL-14 東海道 焼津の原 光逸 作
Yaizu By Koitsu 1935
39.4×25.6cm (15 1/2×10 in.)



LL-15 日光 二荒山 光逸 作
Futarasan Temple-Nikko
By Koitsu 1936
39.7×25.8cm(15 5/8×10 1/8 in.)



LL-16 浅草 仁王門 光逸 作
Deva Gate at Asakusa
By Koitsu 1934
39.2×25.4cm (15 1/2×10 in.)



LL-18 上野 不忍の池 光逸 作
Sinobazu Pond By Koitsu 1939
39.4×26.4cm(15 1/2×10 3/8 in.)



LL-23 瀬戸内海 明石の港 光逸 作
Port Akashi By Koitsu 1938
26.1×39.2cm (10 1/4×15 1/2 in.)



LL-24 須磨の浦 光逸 作
Suma Beach By Koitsu 1938
25.8×38.8cm(10 1/8×15 1/4 in.)



LL-25 舞子の浜 光逸 作
Maiko Beach By Koitsu 1938
26.1×39.4cm(10 1/4×15 1/2 in.)



LL-29 浅草 観音堂 光逸 作
Asakusa Kannon Temple
By Koitsu 1933
39.1×25.8cm(15 3/8×10 1/8 in.)

LL size 35,000円(税抜き)



LL-26 雀 光逸 作
Sparrow By Koitsu
39.2×25.4cm (15 1/2 × 10 in.)



LL-27 鶯 光逸 作
Bush Warbler By Koitsu
39.2×25.4cm (15 1/2 × 10 in.)



LL-28 鴨 光逸 作
Wild Duck By Koitsu
39.2×25.4cm (15 1/2 × 10 in.)



LL-31 竹に帆 荻浦 作
Bamboo and Sailboat By Tekiho
39.3×25.4cm (15 1/2 × 10 in.)



LL-32 竹に川 荻浦 作
Bamboo and River By Tekiho
39.2×25.8cm (15 1/2 × 10 1/8 in.)



LL-33 竹に梅 荻浦 作
Bamboo and Apricot By Tekiho
39.3×25.6cm (15 1/2 × 10 in.)



LL-34 松に川 荻浦 作
Pine Tree and River By Tekiho
39.2×25.6cm (15 1/2 × 10 in.)

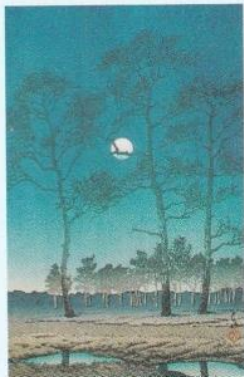


LL-35 竹に山 荻浦 作
Bamboo and Mountain By Tekiho
39.3×25.7cm (15 1/2 × 10 in.)



LL-36 二本松 荻浦 作
Two Pine Tree By Tekiho
39.2×25.7cm (15 1/2 × 10 in.)

LA size 32,000円(税抜き)



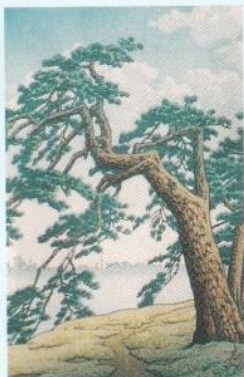
LA-01 冬の月 戸山ガ原 巴水 作
Field of Toyama By Hasui 1931
36.3×24.1cm (14 1/4×9 1/2 in.)



LA-02 富士の雪晴 田子の浦 巴水 作
Tago Bay By Hasui 1932
36.4×24.1cm (14 3/8×9 1/2 in.)



LA-03 暮るる雪 江戸川 巴水 作
Edo River By Hasui 1932
36×23.3cm (14 1/8×9 1/8 in.)



LA-04 霧の朝 四谷見付 巴水 作
Yotsuyamitsuke By Hasui 1932
36.4×23.8cm (14 3/8×9 3/8 in.)



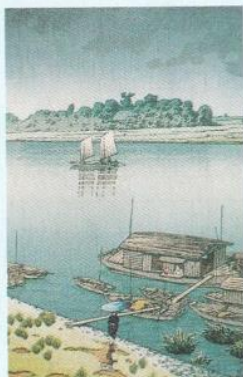
LA-05 春の月 二宮海岸 巴水 作
Ninomiya Beach By Hasui 1932
36.4×23.8cm (14 3/8×9 3/8 in.)



LA-06 春の雪 京の清水 巴水 作
Kiyomizu Temple - Kyoto
By Hasui 1932
36.3×23.8cm (14 1/4×9 3/8 in.)



LA-07 春雨 護国寺 巴水 作
Gokoku Temple By Hasui 1932
36.4×24cm (14 3/8×9 1/2 in.)



LA-08 五月雨 荒川 巴水 作
Ara River By Hasui 1932
36.3×23.9cm (14 1/4×9 3/8 in.)



LA-09 増上寺の雪 光逸 作
Zoju Temple By Koitsu 1933
36.3×23.8cm (14 1/4×9 3/8 in.)

LA size 32,000円(税抜き)



LA-10 弁慶橋 光逸 作
Benkei Bridge By Koitsu 1933
36.3×24cm (14 1/4×9 1/2 in.)



LA-11 根津神社 光逸 作
Nezu Shrine By Koitsu 1932
36.4×24.2cm (14 3/8×9 1/2 in.)



LA-13 四ツ谷 荒木横町 光逸 作
Arakicho By Koitsu 1935
36.3×24cm (14 1/4×9 1/2 in.)



LA-14 品川沖 光逸 作
The Coast of Shinagawa
By Koitsu 1935
36.3×24.2cm (14 1/4×9 1/2 in.)



LA-15 上野 清水堂 光逸 作
Kiyomizu Kannon Temple
By Koitsu 1940
36.3×24cm (14 1/4×9 1/2 in.)



LA-17 柳橋 光逸 作
Yanagibashi By Koitsu 1934
36.3×24cm (14 1/4×9 1/2 in.)



LA-18 隅田川 水神森 光逸 作
Sumida River By Koitsu 1934
36.3×24cm (14 1/4×9 1/2 in.)



LA-19 月夜の江の島 巴水 作
Enoshima Beach By Hasui 1933
36.4×24.1cm (14 3/8×9 1/2 in.)



LA-29 暮るる雪 江戸川 巴水 作
Edo River By Hasui 1932
36×23.3cm (14 1/8×9 1/8 in.)

LA size 32,000円(税抜き)



LA-20 夜の池の端 不忍池 巴水 作
Ikenohata by Night

By Hasui 1932

24×36.5cm (9 1/2×14 3/8 in.)



LA-21 高輪 泉岳寺 光逸 作
Sengaku Temple By Koitsu 1933

23.8×36.3cm (9 3/8×14 1/4 in.)



LA-22 雪の宮島 光逸 作
Snow Scene of Miyajima

By Koitsu 1937

24.1×36.5cm (9 1/2×14 3/8 in.)



LA-23 長良川 鵜飼 光逸 作
Fishing with Cormorants at Nagara

By Koitsu 1940

24.2×36.8cm (9 1/2×14 1/2 in.)



LA-24 河口湖 光逸 作
Lake Kawaguchi By Koitsu 1933

24.1×36.4cm (9 1/2×14 3/8 in.)



LA-25 精進湖 光逸 作
Lake Shoji By Koitsu 1934

24×36.5cm (9 1/2×14 3/8 in.)



LA-26 西湖の夕照 光逸 作
Lake Sai By Koitsu 1938

24×36.4cm (9 1/2×14 3/8 in.)



LA-27 山中湖 光逸 作
Lake Yamanaka By Koitsu 1939

24×36.3cm (9 1/2×14 1/4 in.)



LA-28 本栖湖 光逸 作
Lake Motosu By Koitsu 1934

23.8×36.3cm (9 3/8×14 1/4 in.)



NA-01 河口湖 巴水 作
Lake Kwaguchi By Hasui 1932
36.4×16.4cm (14 3/8 × 6 1/2 in.)



NA-02 潮来の夕暮 巴水 作
Itako By Hasui 1932
36.4×16.5cm (14 3/8 × 6 1/2 in.)



NA-03 船堀の雪 巴水 作
Funabori By Hasui 1932
36.3×16.4cm (14 3/8 × 6 1/2 in.)



NA-04 奈良 猿沢の池 光逸 作
Sarusawa Pond, Nara
By Koitsu 1934
36.4×16.6cm (14 3/8 × 6 1/2 in.)



NA-05 京都 二条城 光逸 作
Nijo Castle, Kyoto
By Koitsu 1933
36.4×16.3cm (14 3/8 × 6 3/8 in.)



NA-06 安芸の宮島 光逸 作
Miyajima By Koitsu 1936
36.3×16.4cm (14 1/4 × 6 1/2 in.)



NB-01 おしどり 光逸 作
Mandarin Duck By Koitsu
34.8×17.8cm (13 3/4 × 7 in.)



NB-02 雀 光逸 作
Sparrow By Koitsu
34.7×17.7cm (13 5/8 × 7 in.)



NB-03 鶯 光逸 作
Bush Warbler By Koitsu
34.8×17.5cm (13 3/4 × 6 7/8 in.)



NB-04 鴨 光逸 作
Wild Duck By Koitsu
34.8×17.8cm (13 3/4 × 7 in.)



NB-05 鷹 光逸 作
Hawk By Koitsu
34.7×17.7cm (13 5/8 × 7 in.)



NB-07 みみずく 光逸 作
Owl By Koitsu
35×17.7cm (13 3/4 × 7 in.)

NA/NB size 24,000円(税抜き)

MB size 22,000円(税抜き)



MB-01 夜の三井寺 光逸 作
Mii Temple By Koitsu 1936
25.6×18cm (10×7 in.)



MB-02 横浜 三溪園 光逸 作
Yokohama Sankei Garden
By Koitsu 1936
25.6×17.9cm (10×7 in.)



MB-03 松島 光逸 作
Matsushima By Koitsu 1936
25.7×17.9cm (10 1/8×7 in.)



MB-04 雪の宮島 光逸 作
Itsukushima Shrine
By Koitsu 1936
25.6×18cm (10×7 in.)



MB-05 日光 五重の塔 光逸 作
Pagoda in Nikko
By Koitsu 1936
25.7×17.7cm (10 1/8×7 in.)



MB-06 舞子の浜 光逸 作
Maiko Beach By Koitsu 1936
25.6×18cm (10×7 in.)



MB-07 西伊豆 三津の浜 光逸 作
Mito Beach By Koitsu 1936
25.7×18cm (10 1/8×7 in.)



MB-08 真鶴港 光逸 作
Port Manazuru By Koitsu 1936
25.6×18cm (10×7 in.)



MB-09 東海道 焼津力原 光逸 作
Yaizu By Koitsu 1936
25.6×17.8cm (10×7 in.)



MB-10 田子の浦 光逸 作
Tago Bay By Koitsu 1936
25.6×17.9cm (10×7 in.)



MB-11 日光 二荒山 光逸 作
Futarasan Temple - Nikko
By Koitsu 1936
25.6×18cm (10×7 in.)

LC size 32,000円(税抜き)



LC-01 亀戸 ヌエット 作
Kameido By Nouet 1936
36.2×23.9cm (14 1/2×9 3/8 in.)



LC-02 赤坂見付 ヌエット 作
Akasakamitake By Nouet 1936
36.5×24.2cm (14 3/8×9 1/2 in.)



LC-03 浅草寺 ヌエット 作
Senso Temple By Nouet 1936
36.3×24cm (14 1/4×9 1/2 in.)



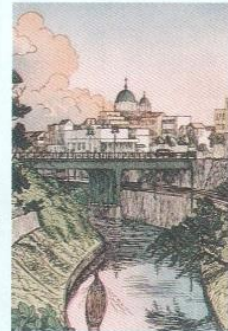
LC-04 芝古川 ヌエット 作
Furukawa By Nouet 1936
36.2×24cm (14 1/2×9 1/2 in.)



LC-05 両国橋 ヌエット 作
Ryogoku Bridge By Nouet 1936
36.5×24cm (14 3/8×9 1/2 in.)



LC-06 不忍池 ヌエット 作
Shinobazu Pond By Nouet 1936
36.4×24cm (14 3/8×9 1/2 in.)



LC-07 御茶の水 ヌエット 作
Ochanomizu By Nouet 1936
36.3×24.1cm (14 1/2×9 1/2 in.)



LC-08 弁慶堀 ヌエット 作
Moat Benkei By Nouet 1936
36.4×23.9cm (14 3/8×9 3/8 in.)



LC-09 神楽坂 ヌエット 作
Kagurazaka By Nouet 1936
36.4×24cm (14 3/8×9 1/2 in.)



LC-10 日本橋 ヌエット 作
Nihon Bridge By Nouet 1936
36.3×24cm (14 1/2×9 1/2 in.)