



1.霜月 (SHIMOTSUKI)



2.日永 (HINAGA)



3.残陽 (ZANYOU)



5.終日 (SYUJITSU)



6.神渡し (KAMIWATASHI)



8.夜明 (YOAKE)



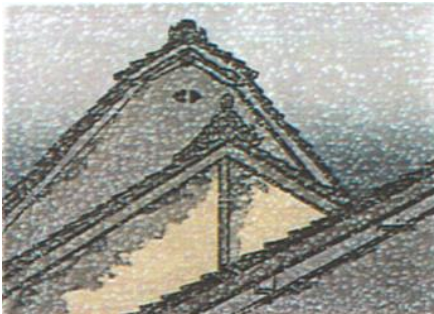
9.月明 (TSUKIAKARI)



10.落日 (RAKUBI)



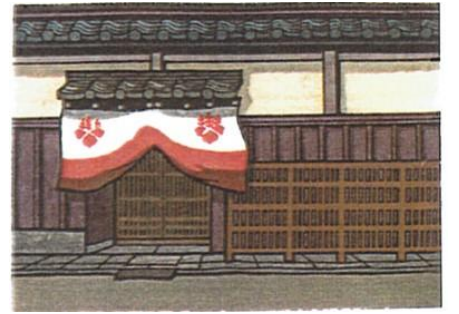
11.夏入 (NATSUIRI)



13.初冬 (HATSUFUYU)



15.梅雨晴 (TSUYUBARE)



17.松の内 (MATSUNOUCHI)



19.大寒 (DAIKAN)



22.短日 (TANJITSU)



24.弥生 (YAYOI)



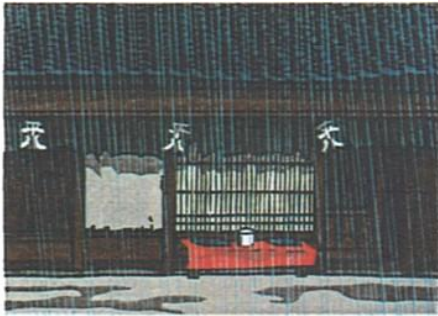
26.長月 (NAGATSUKI)



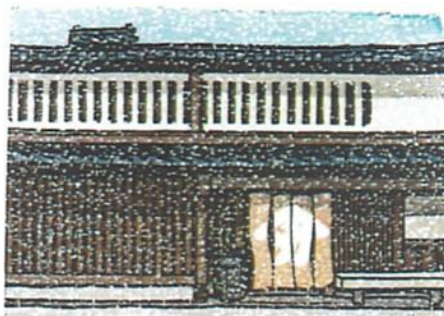
27.神無月 (KANNATSUKI)



29.十六夜 (JYUROKUYA)



30.白雨 (HAKUU)



33.淡雪 (AWAYUKI)



36.四温 (SHION)



39.雨上り (AMEAGARI)



42.春めく (HARUMEKU)



46日向 (HIMUKAI)



47.春日 (KASUGA)



48.晴間 (HAREMA)



52.雪晴 (YUKIBARE)



53.日和 (HIYORI)



55.土用 (DOYOU)



58.ゆらぐ (YURAGU)



59. 雪花 (YUKIBANA)



64. 行雲 (GYOUN)



65. 寒月 (KANZUKI)



66. 日々 (HIBI)



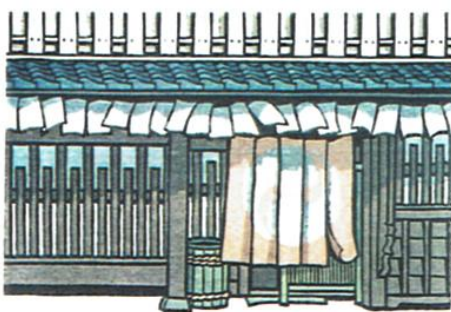
67. うらら (URARA)



73. 花の頃 (HANA NO KORU)



74. 立秋 (RISSYU)



75. 立冬 (RITTOU)



78. とりどり (TORIDORI)



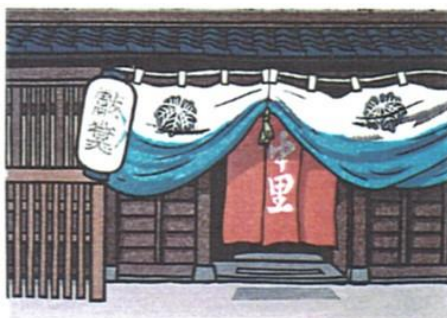
81. 夕明 (YUAKARI)



82. 白日 (HAKUJITSU)



84. 有明 (ARIAKE)



85. 晴の日 (HARENOHI)



94. 日だまり (HIDAMARI)



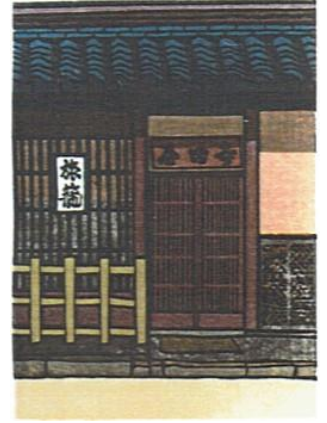
4 やや寒 (YAYASAMU)



7 小春日 (KOHARUBI)



12. 雨晴 (AMEHARE)



14. 春分 (SYUNBUN)



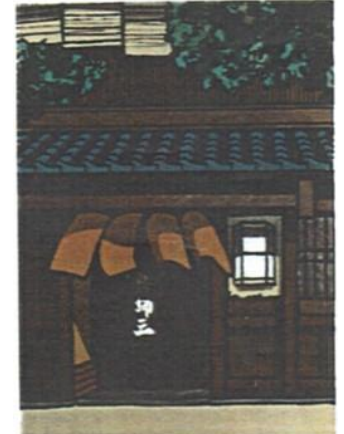
16. 都おどり (MIYAKOODORI)



18. 立夏 (RIKKA)



20. ゆく秋 (YUKUAKI)



21. 葉月 (HAZUKI)



23. 三伏 (SANPUKU)



25 五月 (GOGATSU)



28. 如月 (KISARAGI)



31 好日 (KOUJITSU)



32.立春 (RISYUN)



34.文月 (FUZUKI)



35.そよ吹く (SOYOFUKU)



37.残暑 (ZANSYO)



38.菊月 (KIKUZUKI)



40.卯月 (UZUKI)



41.屋下り (HIRUSAGARI)



43.野分 (NOWAKE)



44.夕色 (YUUSYOKU)



45.秋めく (AKIMEKU)



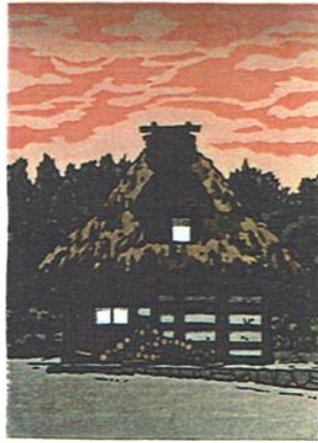
49.雪月 (YUKITSUKI)



50.走り雨 (HASHIRIAME)



51.冬至(TOUJI)



54.夕さり(YUUSARI)



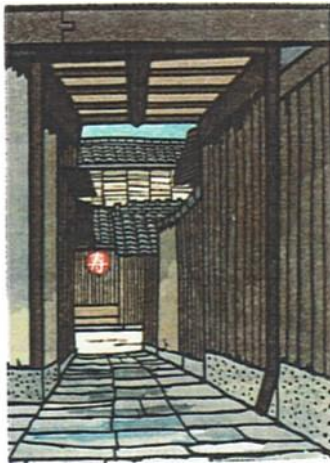
56.茜(AKANE)



57.淡昼(TANCHU)



60.うす日(USUBI)



61.日差し(HIZASHI)



62.東雲(SHINONOME)



63.涼し(SUZUSHI)



68.白緑(HAKURYOKU)



69.雲の波(KUMONONAMI)



70.時雨(SHIGURE)



71.頃日(KOROBİ)



72.のどか(NODOKA)



76.六花(ROKKA)



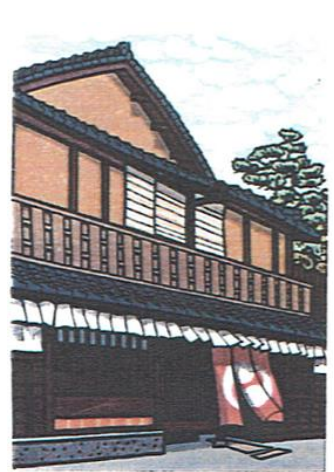
78.ゆく春(YUKUHARU)



79.雲立つ(KUMOTATSU)



80.たそがれ(TASOGARE)



83.処暑(SYOSYO)



86.雪もよい(YUKIMOYOI)



87.朔日(SAKUJITSU)



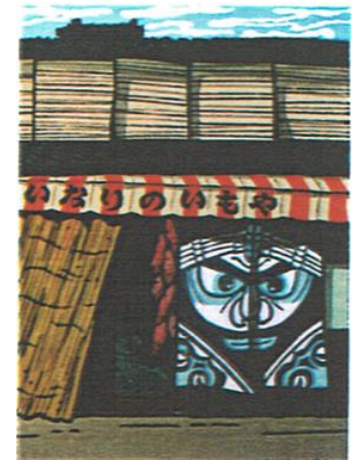
88.花の里(HANANOSATO)



89.冬めく(FUYUMEKU)



90.至日(SHIJITSU)



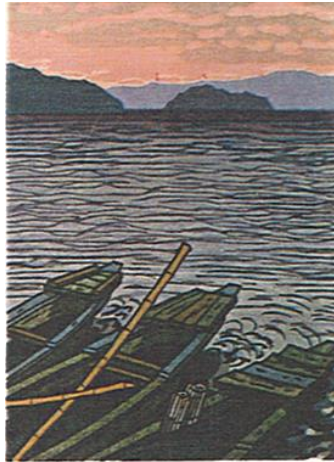
91.秋ふかし(AKIFUKASHI)



92.佳日 (KAJITSU)



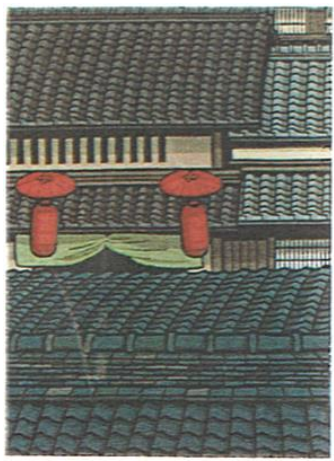
93.月映 (TSUKIBAE)



95.旭 (ASAHI)



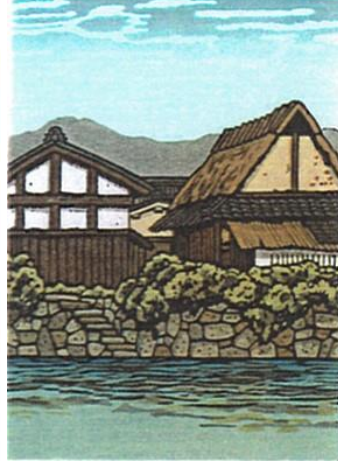
96.深緑 (SHINRYOKU)



97.鉾立 (HOKOTATE)



98.黄雲 (KOUUN)

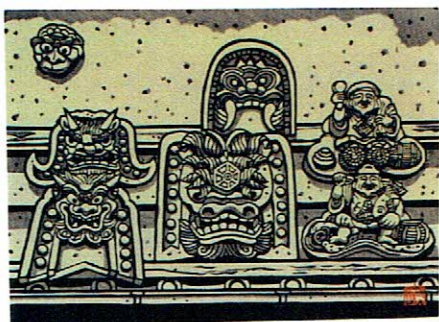


99.秋の朝 (AKINOASA)

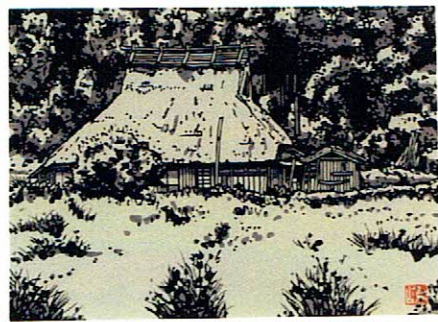


100.仲春 (CYUSYUN)

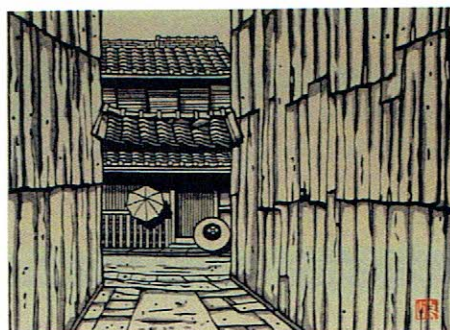




1 新門前



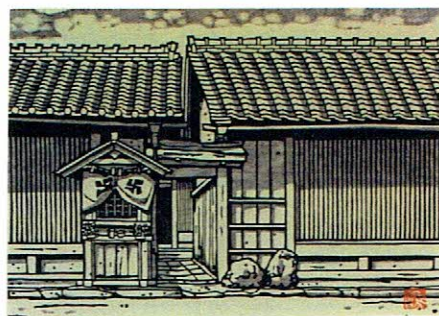
2 能見



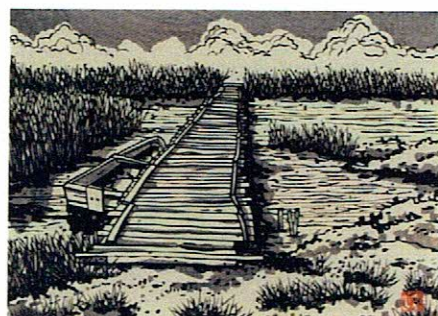
4 祇園



5 あど川



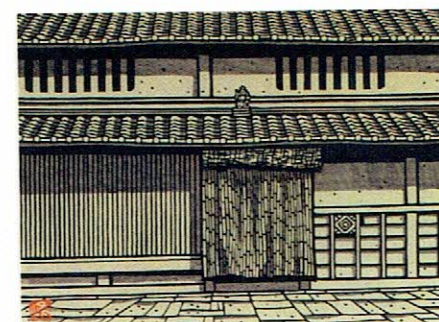
6 寺の内



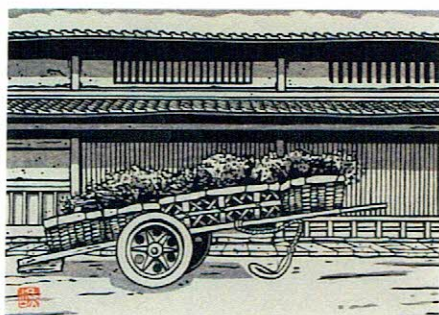
8 安土



9 矢橋



11 紫野



12 大宮通



13 竹生島



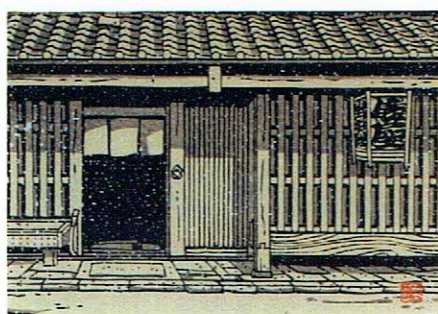
15 唐崎



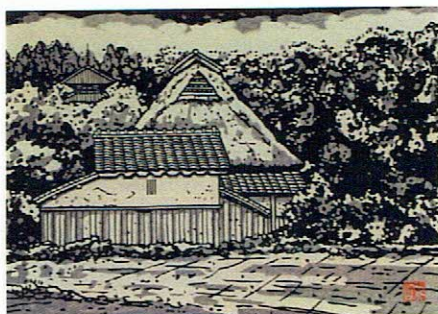
16 信楽



18 宮川町



20 北野



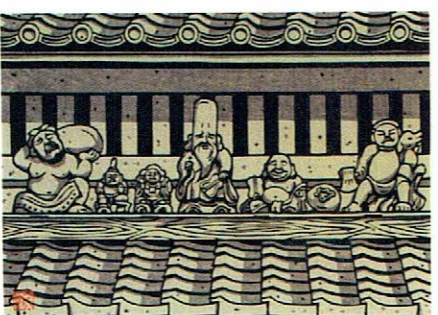
22 石部



24 長浜



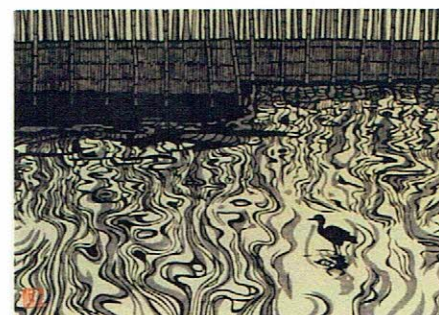
25 知内浜



26 本町通



28 つぼや



29 堅田沖



30 浮御堂